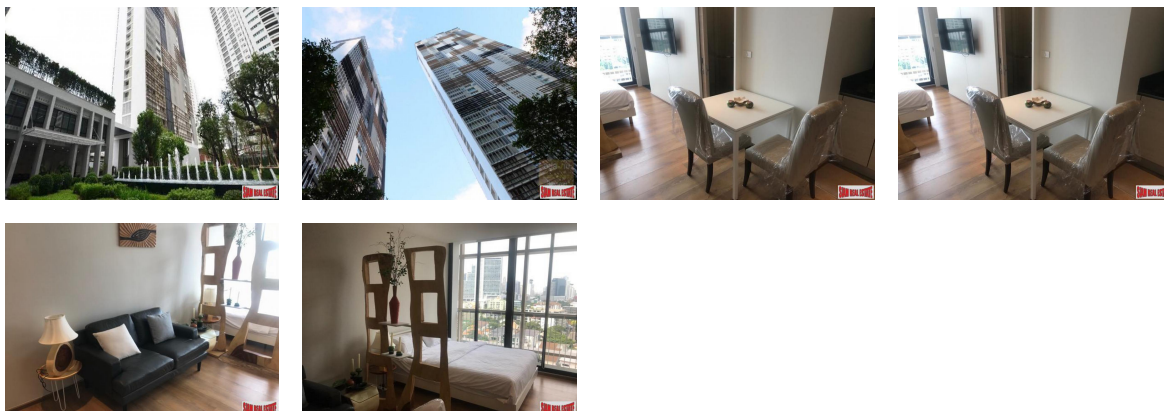


APARTMENT FOR SALE



Phrom Phong

Phrom Phong, Bangkok

Thailand

Asking Price

7,200,000 THB

Bedrooms 1

Year Built 0

Bathrooms 1

Date Listed 12/29/2023

Size 29 Sq M

Listing ID GL-1672363663

Listed by: Siam Real Estate

For more information, visit:

<https://www.globallistings.com/9242173>

Overview

This is a cozy one bedroom apartment is situated in the Park 24. Located in a fantastic part of Bangkok, close to shopping malls, restaurants, BTS and Benchasiri Park.

The apartment is on the 11th floor and has a big open living space which includes the living room, dining area that seats two and a western kitchen. The kitchen comes with a stovetop, microwave, refrigerator and a washing machine for your convenience. There is a small balcony for relaxing.

The bedroom has fantastic city views from a big oversized windows. A contemporary bathroom includes a glass enclosed shower. Contact us today.

Facilities include

* Elevator

* Parking

* 24-hours security

* CCTV

* Swimming pool

* Sauna

* Gym

* Garden / bbq

Location

Conveniently located just within 700 m or about 9 minutes walk from the Phrom Phong. If you drive, the nearest tollway entrance is located 1.8 km from the condo.

Numerous shops are situated within reach:

* X Sizes Outlet is 320 m away (approximately 4 minutes by foot)

* Twenty Four Avenue - 370 m (4 minutes by foot)

* Tops Market (Sukhumvit 24) - 430 m (5 minutes by foot)

* K Village - 680 m (8 minutes by foot)

* Emporium Shopping Mall - 700 m (8 minutes by foot)

* 7-Eleven convenience store, located just 2 minutes walk away

The closest schools include

* The World Buddhist University, located within 910 m away (approximately 3 minutes by car)

* Singfa School - 1 km (6 minutes by car)

* Sainampeung School - 1.1 km (4 minutes by car)

* Sai Namthip School - 1.1 km (4 minutes by car)

* Aksara International School - 1.2 km (4 minutes by car)

Nearby restaurants

* Bistro M Restaurant - 58 m (1 minute by foot)

* Wagyu-yaki Steak House Restaurant - 110 m (1 minute by foot)

* Library - 290 m (3 minutes by foot)

* Nadimos - 310 m (4 minutes by foot)

* Arte Delivery Restaurant - 360 m (4 minutes by foot)

* Prommitr Hospital is the nearest hospital, which is located 1.5 km from the condominium. It will take about 7 minutes by car to go there.

2 Sleeps

1 Bedrooms

1 Bathrooms

Western Kitchen

Sauna

Parking Space

Near Shopping

Near Schooling

Near Hospitals

Laundry Room

Internet Connection

Gym

Garden

Fully Furnished

Electricity

Communal Pool

City View

Cable/satellite (UBC)

Air-conditioners

Phrom Phong

Contact

Email

Phone

Patrick@siamrealestate.com