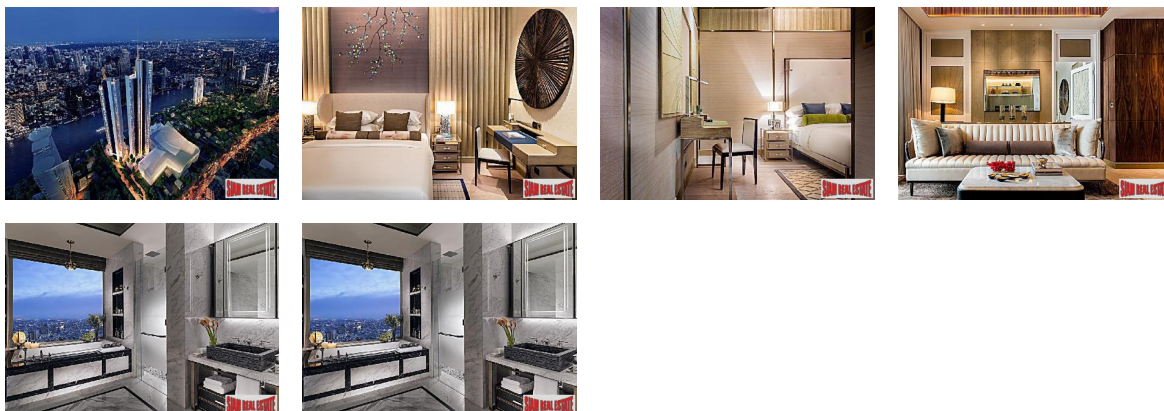


APARTMENT FOR SALE



Silom

Silom, Bangkok

Thailand

Asking Price

107,300,000 THB

Bedrooms 2

Bathrooms 2

Size 128 Sq M

Listed by: Siam Real Estate

Year Built 0

Date Listed 12/29/2023

Listing ID GL-

1672360877

For more information, visit:

<https://www.globallistings.com/9241685>

Overview

The super-luxury riverside residences 'The Residences at Mandarin Oriental, Bangkok' are located in ICONSIAM, the new Bht 50-billion riverside national landmark in Thailand. They are designed and being built to the highest standards of luxury that, together with their enchanting location, make these residences among the best in the world.

FIRST 'MANDARIN ORIENTAL' BRANDED RESIDENCES
IN SOUTHEAST ASIA

The Residences at Mandarin Oriental, Bangkok is the first 'Mandarin Oriental' branded residences in Southeast Asia, situated diagonally across the Chao Phraya River from the Mandarin Oriental Hotel, Bangkok.

The legendary Mandarin Oriental's brand promise includes an unrivalled commitment to providing the finest property management and hospitality services which have made the Mandarin Oriental name synonymous with exceptional standards of luxury, worldwide.

BREAKS ALL LUXURY AND PRICING RECORDS

- Investment increases to Bht 9,000 million - more than 30% more per saleable square metre than the best

of any residential offering in the city.

- Each residence has its own, private lift entry, 3.20-metre high ceilings, and common areas that are around three times greater per unit than most grade-A rated condominiums in Bangkok.

- Additional unique benefits include membership of the Mandarin Oriental's Residences Elite programme that brings with it worldwide privileges when staying at any Mandarin Oriental hotel, and special VIP recognition and privileges when shopping at ICONSIAM retail outlets.

- Pricing - is at around Bht 350,000 per square metre, and penthouses priced at Bht 550,000 per square metre.

- Size - from approximately 130 to 230 square metres, and the penthouses and duplex penthouses from 380 to 710 square metres.

UNIQUENESS

- The enchanting location and magnificent riverside location at ICONSIAM - the new national landmark, 50-rai (20-acre) site that includes another luxurious residential building of 70 floors, called the Magnolias Waterfront Residences, two of the world's most glamorous retail complexes, as well as seven attractions that will be the first of their kind in Thailand, including a spectacular waterfront promenade.

- The exceptional combination the prestige of the Mandarin Oriental brand, a feeling of being close to nature, a sense of Thai charm, combined with world-class design and construction, as well as attention to the smallest details.

Project Area: 4-3-62 Rai

Project Type: High rise condominium, 52 floors, 1 building, 146 units

Target Group: Super Luxury, Ultra Luxury

Status of Construction: Begin construction at the third quarter of 2015

Expected Date of Completion: Year 2018

Security System: Key Access, Private Lift Lobby

Automatic Car Parking: 350 spaces

Common Fees: 160 baht/ sq.m./ month

Starting Price: Approximately 350,000 baht/ sq.m.

Types of Room

2 Bedroom room size 127.87 - 165.40 sq.m.

3 Bedroom room size 222.21 - 228.88 sq.m.

Penthouse room size 380.93 - 383.98 sq.m.

Penthouse Duplex room size 707.28 sq.m.

Project Overview

The location of the project ICONSIAM, occupy 50 Rai worth of space; and 45 meters away from the River. The units are design so that the householder can see the Chaopraya River. The height of the unit is 3.20 meters, which gives in an open space and luxury perspective to the householder. The facility takes up 3,000 meters, located in the 4th and 5 floor, with a Modern & Contemporary design, with sense of luxury; designed by the world best designer.

Building Constructor: Italian Thai Development Co. Ltd

Interior Designer: World Famous designer Joyce Wang

All the rooms in the unit are fully-fitted type, but the householder can choose fully-furnished; which is around 60,000 baht per sq.m.

Fully Fitted option benefit

Elevator: Private Lift Lobby

Floor: Custom-Designed Flooring

Height: 3.2 meters

Closet: Walk-In Closet

Windows: Floor to Ceiling Window

Fully Furnished option benefit

Furniture: Loose Furniture, or carpets, curtains, and lamps

Wall: Wallpaper

Headboard: Headboard made from Fromental London

* Additional advantage for householder is becoming 'Residence Elite Programme' Membership, of Mandarin Oriental Hotel that covers all over the world. When check-in at the Oriental Hotel Mandarin, you will get special recognition and VIP status; or when shopping in ICONSIAM.

The Facilities in the Project

Club House

Business Center

Lounge

Infinity-edge Lap Pool, Jacuzzi

Fitness Center

Mini Golf- court

Game Room

Automatic car parking

This condominium is divided into 2 phases. The first phase will be a 70-storey building, with the total of 379 units, including different types of rooms as follows: 1 bedroom occupying 60-77 sq. m., in the total of 203 unit; the second type is 2 bedrooms with an area of 95- 126 sq.m., with the total of 107 units; the third type is 3 bedrooms occupying the area of 144-222 sq.m, with the total of 61 units. Duplex rooms that occupies an area of 293 sq.m. with total of 2 units; Duplex Sky Villa which occupies the space of 238 and 276 sq.m., with the total of 2 units. Lastly, the Sky Villa Rooms occupying the space of 346 sq.m., with the total of 4 units. Each units are 3 meters high.

Contact us today for more information!

Telephone Lines

2 Bedrooms

2 Bathrooms

Western Kitchen

Sauna

Parking Space

Near Shopping

Near Schooling

Near Hospitals

Near Golf Courses

Near Airport

Laundry Room

Internet Connection

Home security system

Gym

Garden

Garage

Fully Furnished

Communal Pool
Cable/satellite (UBC)
Air-conditioners
Krung Thonburi

Contact

Email

Phone

Patrick@siamrealestate.com