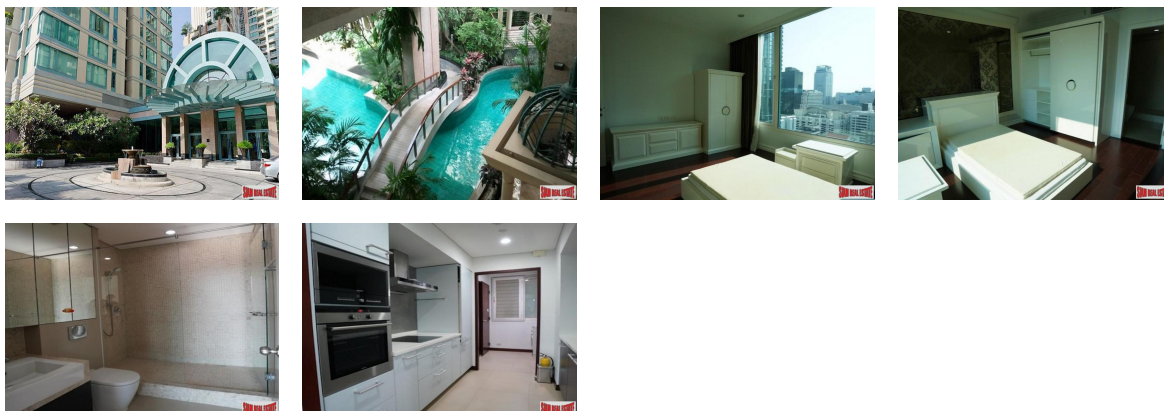


APARTMENT FOR RENT



Chit Lom

Chit Lom, Bangkok

Thailand

Monthly Rent

100,000 THB

| | | | |
|-----------|----------|-------------|---------------|
| Bedrooms | 2 | Year Built | 0 |
| Bathrooms | 3 | Date Listed | 12/29/2023 |
| Size | 157 Sq M | Listing ID | GL-1672352432 |

Listed by: Siam Real Estate

For more information, visit:

<https://www.globallistings.com/9240147>

Overview

This is a spacious two bedroom, three bath condo situated in a super luxury building in the heart of CBD Bangkok. Located on a high floor and very private with only two units on this 19th floor. The building has excellent facilities including a tennis court, golf simulator, a large fitness center and swimming pool in a park-like setting.

There is a large open plan living room with dining area and leads out to a large size balcony. Full size windows in every room for natural light. The western kitchen is separate includes a stovetop, oven, microwave, refrigerator and washing machine. Both bedrooms have ensuite bathrooms with separate showers & bathtubs, and the master bedroom comes with a walk-in closet. The bedrooms have lots of built-in cabinets and shelving. There is a third guest bathroom and a separate maids room.

The apartment comes with two parking spaces, with the building at 200% capacity and the building has very good security. This is a great Chit Lom location with many amenities nearby. Contact us for additional details.

Facilities

* Elevator

* Parking

* 24-hours Security

* CCTV

* Swimming Pool

* Sauna

* Gym

* Garden

* Jacuzzi

* Meeting Room

* Roof Terrace

* Tennis Court

* Golf Simulator

4 Sleeps

2 Bedrooms

3 Bathrooms

Western Kitchen

Tennis Court

Spa

Sauna

Parking Space

Near Shopping

Near Schooling

Near Hospitals

Laundry Room

Internet Connection

Gym

Garden

Fully Furnished

Electricity

Communal Pool

City View

Cable/satellite(UBC)

Air-conditioners

Chit Lom

Pets Restricted
Children Allowed
No Smoking

Contact

Email

Phone

Patrick@siamrealestate.com