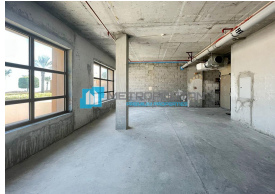
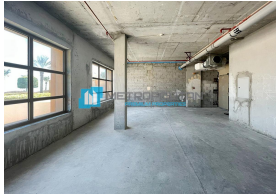
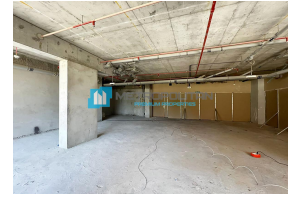
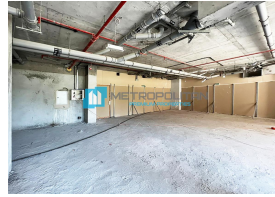
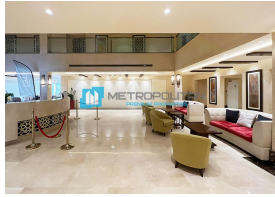


HOME FOR RENT



Palm Jumeirah
Palm Jumeirah, Dubai
United Arab Emirates

Monthly Rent
430,450 AED

Bedrooms	0	Year Built	0
Bathrooms		Date Listed	12/29/2024
Size	1,722 Sq Ft	Listing ID	GL-1672349212

Listed by: Metropolitan Premium Properties

For more information, visit:

<https://www.globallistings.com/9239416>

Overview

Metropolitan Premium Properties proudly presents this retail space in Palm Jumeirah. Great opportunity in a high-end residential compound.

The self-proclaimed eighth wonder of the world, Palm Jumeirah is the largest manmade island on the planet. Set on the coast of the Arabian Sea, in the dynamic city of Dubai, it is an eye-catching landmark of the world. As the name suggests, it is built in the shape of a palm tree which is a common plant in the Middle East.

Property Features:

- Shell and core
- Multiple Units
- Amazing location
- 24/7 security and maintenance service
- CCTV systems monitor all critical areas and exit points
- Great facilities
- Units are visible from the main lobby
- pet allowed
- suitable for pharmacy, yoga center, VET shop, coffee shop

Contact our agents for more details about the property. Metropolitan Premium Properties (MPP) is dedicated to delivering our clients a wide array of services: sales, rentals, property management, consulting services, mortgage brokerage, and many more. It is an accredited agency for all licensed developers across the UAE, a leader in the UAE market, and considered one of Dubai's top real estate agencies.

PROPERTY FEATURES:

- Basement parking
- Broadband ready
- Central air conditioning
- Community View
- Covered parking
- Gazebo and outdoor entertaining area
- Gymnasium
- Landscaped Garden
- On low floor
- Pets allowed
- Private garden
- Satellite/Cable TV
- Shared swimming pool
- View of gardens
- View of parkland
- View of sea/water
- 24 hours Maintenance
- Bank/ATM Facility
- Beach Access
- Bus services
- Concierge service
- Marina Berth
- Mosque
- Public park
- Public parking
- Public transport
- Recreational Facilities
- Restaurants
- Shopping mall
- Shops
- Walking Trails

- Basement parking
- Broadband ready
- Central air conditioning
- Community View
- Covered parking
- Gazebo and outdoor entertaining area
- Gymnasium
- Landscaped Garden
- On low floor
- Pets allowed
- Private garden
- Satellite/Cable TV
- Shared swimming pool
- View of gardens
- View of parkland
- View of sea/water

- 24 hours Maintenance
- Bank/ATM Facility
- Beach Access
- Bus services
- Concierge service
- Marina Berth
- Mosque
- Public park
- Public parking
- Public transport
- Recreational Facilities
- Restaurants
- Shopping mall
- Shops
- Walking Trails

Contact

Email

commercial@mpd.ae

Phone

+971543219259