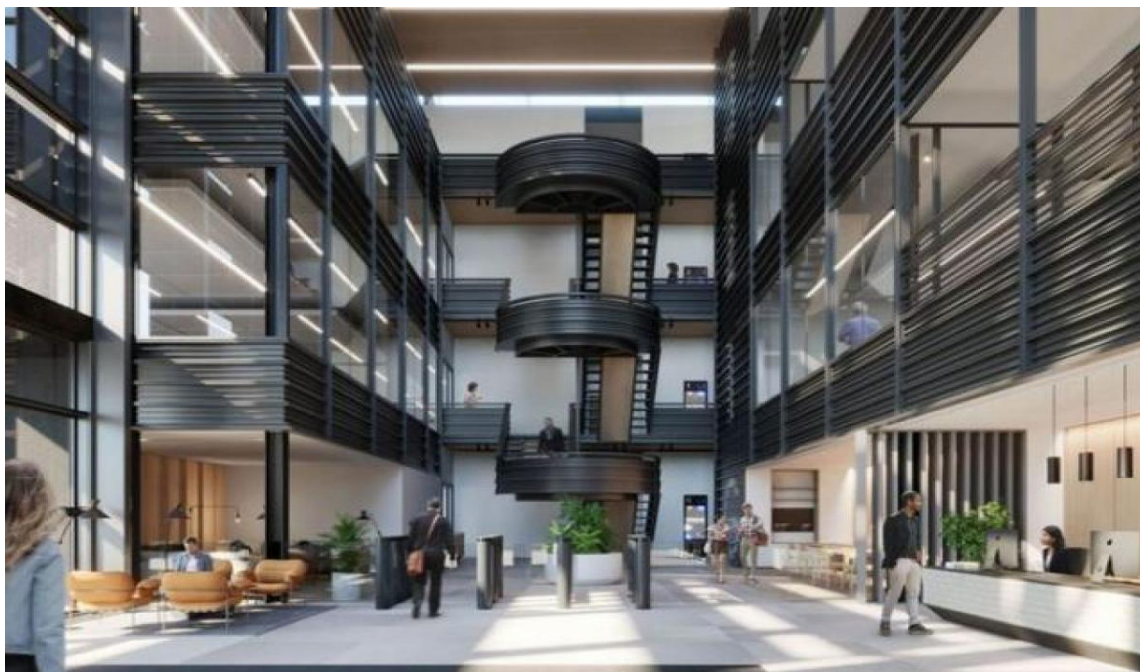


**OFFICE FOR RENT**



Bath Road

Slough, Berkshire

United Kingdom

Monthly Rent

£1

Size	<b>0 Sq M</b>	Date Listed	<b>01/10/2023</b>
Year Built		Listing ID	<b>GL-1641858591</b>
Office Class			
Listed by:	Listanza Services Group		

For more information, visit:

<https://www.globallistings.com/6598120>

**Overview**

Description 217 is a striking office building fronting the Bath Road in Slough is under refurbishment and scheduled for completion Summer 2021. Upon completion the building will provide 80,945 sq ft (IPMS3) arranged over ground and three upper floors to include a new cafe and roof terrace. Location 217 is prominently located on the Bath Road in Slough close to the junction with Twinches Lane which provides access to Junction 6 of the M4 motorway. London Heathrow airport is approximately 8 miles away. Slough mainline station and town centre can be easily reached by car or bus from the Bath Road. Slough station provides direct access to London Paddington in approximately 15 minutes and with the addition of the Elizabeth Line (Crossrail) which comes into service in 2022, Central London (Bond Street) will be accessed in around 30 minutes. Accommodation Available Ground Floor - 22,851 sq ft First Floor - 23,758 sq ft Second Floor - 23,775 sq ft Third Floor - 7,481 sq ft Total - 82,275 sq ft Specification The building is being comprehensively refurbished and is due for completion in June 2021. The contemporary office space will include: Large reception and full height atrium 3rd floor cafe and extensive roof terrace Full access raised floors vrf air conditioning (1:8 sq m) with exposed services and raft ceilings LED feature suspended lighting Male Female WCs Shower facilities and gym 3 Passenger lifts 288 car parking spaces (1:265 sq ft) Backbone

enabled Targeting breem Excellent EPC B and Fitwell 3 star rating For more information For more details and to contact:

**Contact**

**Email**

**Phone**