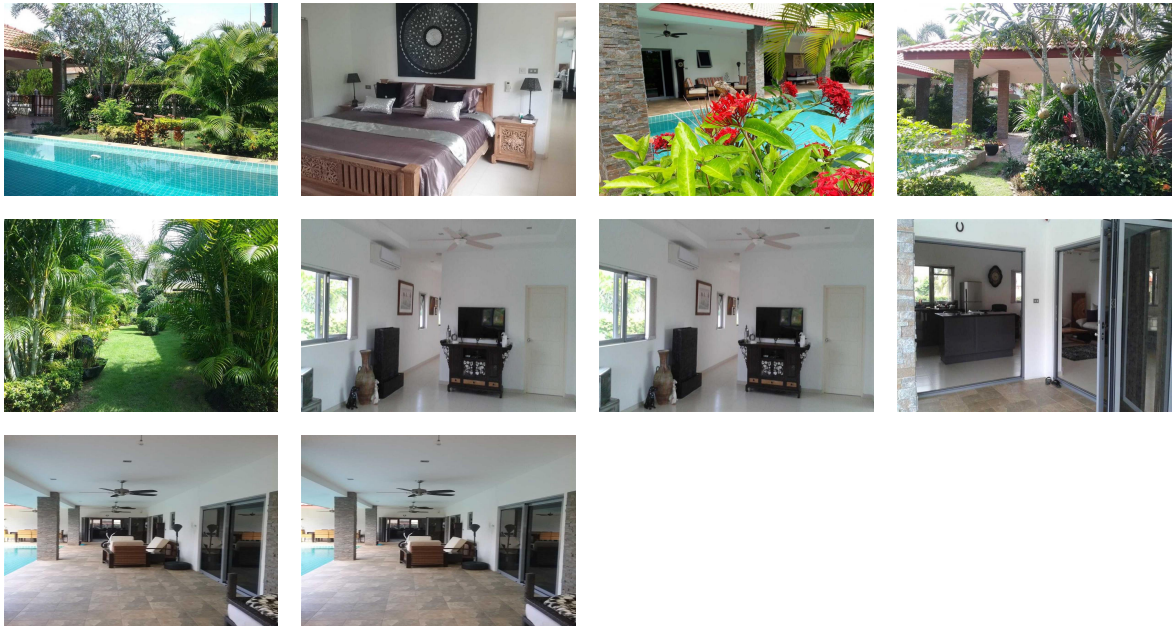


VILLA FOR SALE



Prachuabkirikhan,  
Prachuap Khiri Khan  
Thailand

Asking Price  
€163,000

Bedrooms	2	Year Built	0
Bathrooms		Date Listed	06/10/2023
Size	140 Sq M	Listing ID	GL-1623297707

Listed by: Euro Resales

For more information, visit:

<https://www.globallistings.com/5338883>

## Overview

Superb 2 Bed Villa in Prachuabkirikhan, Hua Hin, Thailand

Euroresales Property iD - 9824565

Property information:

European built and owner-designed this is an L-shaped 4 1/2 year-old villa in immaculate condition on a corner plot.

This light and airy villa has all rooms leading onto an infinity pool with Jacuzzi and surrounded by a beautiful tropical garden with carport.

There are 2 bedrooms with ensuite wet rooms, one with full-length bath.

The main bedroom also has a walk-in wardrobe. The kitchen, with island, is very modern and incorporates a lovely large sitting area.

The full-length tinted bi-fold doors are German made and of very superior quality as are all the light fittings, ceiling fans and air conditioning units.

There is an alarm system with remote cameras and outside an electric gate.

The garden has an automatic irrigation system with lovely shady areas for relaxing and next to the attached pump room/laundry there is a small room for conversion to a study or 3rd bedroom.

The property benefits from city mains water, mains electricity, fiber optic broadband and is close to fishing lakes and golf courses. It is only 10-15 minutes from Hua Hin and the beaches but is in lovely countryside. The development is small with most houses being owner-designed and has a great mix of nationalities and professions.

This is a super house which needs to be seen to be appreciated. The owners are wishing to relocate back to Europe and are sad to be selling.

#### Other information

No. of Beds: 2

No. of Reception Rooms: 1 inc. Kitchen and living area

Floor Space (metres squared): 140

Furnished: Negotiable

Pool: Private

Garden: Private

Plot (metres squared): 650

Covered area (metres squared): Around 50 to 60

Parking: Off Street Parking

View: Country

Orientation: West

Distance from Sea: 15 mins

Distance from Airport: 1.5 Hours +

Distance from Golf: 15 mins

Distance from Main Attraction: 15 mins

#### About the area:

Prachuap Khiri Khan is one of the western provinces of Thailand.

It is in the northern part of the Malay Peninsula, some 240 km south of Bangkok.

Neighbouring provinces are Phetchaburi to the north and Chumphon to the south.

The long white sandy beaches themselves are clean and pretty. Besides sunbathing snorkeling and

swimming,

visitors can also enjoy golf, spas, caves, peaks, waterfalls, shops, and nearby national parks.

**Contact**

**Email**

**Phone**

**[info@euroresales.com](mailto:info@euroresales.com)**