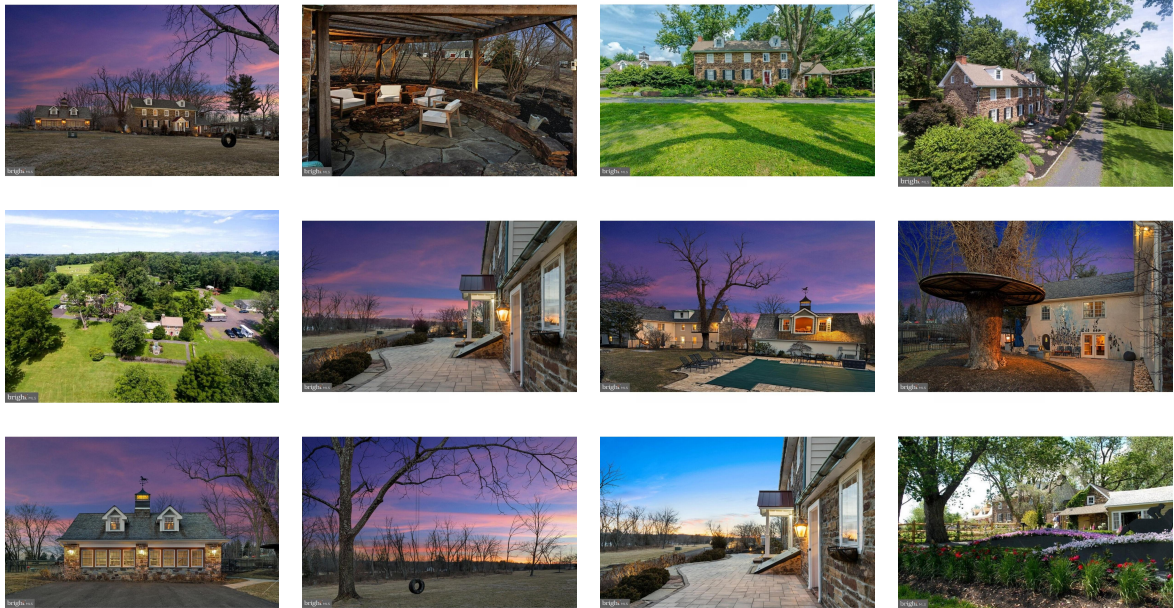


HOME FOR SALE



1515 Sugar Bottom Road

Furlong, Pennsylvania

United States

Asking Price

\$5,795,000

Bedrooms **5**

Year Built

Bathrooms **4**

Date Listed

03/05/2025

Size **3,552 Sq
Ft**

Listing ID

**GL-
1746483088**

Listed by: Homes & Land Magazine

For more information, visit:

<https://www.globallistings.com/12028689>

Overview

This magnificent equestrian estate, Fieldstone Farm, built in 1747, is an incredible CORNER LOT that stands on over 100 stunning acres in the heart of historic Bucks County. Steeped in rich history, Bucks County was first inhabited by the Lenape Indians and later settled by European colonists, including Swedes, Dutch, and Quakers. The area played a crucial role during the Revolutionary War, with George Washington launching his famed crossing of the Delaware from its banks. This estate, including a beautifully restored stone farmhouse and guesthouse, seamlessly blends 18th-century charm with modern luxury. The main house boasts 5 bedrooms, a custom gourmet kitchen, and 3.5 baths, offering a retreat for the most discerning buyer, gentleman farmer, or equestrian. The main residence, enhanced by skilled renovations and modern touches, preserves the unique architectural details of the era. The 1782 date stone on the property# 039;s cottage bears the initials A (Adam), C (Charity), and B (Barr), hinting at the involvement of Charity Barr during Adamsquo;s military service in the Revolutionary War. The estate once flourished as a bustling agricultural hub, complete with cider works, stills, orchards, and barns. This exceptional home features three stunning fireplaces, each adding warmth and character to its beautifully curated spaces. The original walk-in fireplace, now transformed into a charming sitting area, provides the perfect setting to unwind with craft

cocktails in a space steeped in history. The dining room showcases a magnificent fireplace with its original mantel, creating a refined and inviting atmosphere for elegant gatherings. In the graciously sized living room, another fireplace is complemented by original built-ins, blending function with timeless style. Just off the kitchen, the laundry/mudroom is a standout feature, boasting custom-built storage that enhances both convenience and sophistication. The 1782 carriage house/guesthouse, includes a designer kitchen, dining room, great room with a stone fireplace, 2 bedrooms and full bath. Outbuildings, such as a stable, outdoor riding ring, and a climate-controlled garage, cater to equestrians and car enthusiasts alike. Additionally, a 2.5-acre buildable lot provides space to expand and create your vision. This exceptional property marries history with modern elegance, reflecting both the heritage and beauty of Bucks County. The farm is also part of Bucks County history: Set amidst the picturesque pastoral landscapes of Buckingham Township, Pennsylvania, Fieldstone Farm spans 103 acres of equestrian beauty and historic charm. Dating back to 1747, this 18th-century stone estate encapsulates the region's deep-rooted history, tracing its origins to the Morrey family, whose legacy includes Humphrey Morrey, Philadelphia's first mayor appointed by William Penn. Through the centuries, this estate has witnessed transformations under multiple owners, from the Barr family—who expanded its agricultural prominence and historic structures—to notable subsequent caretakers such as the Rittenhouse and Foster families. By the 20th century, Fieldstone Farm saw a variety of changes, from ownership by European immigrants to its eventual showcase as the 2010 Bucks County Designer House and Gardens, showcasing the dedicated work of designers who revived its interiors and exteriors. Today, Fieldstone Farm remains a testament to Bucks County's rural past, enriched by layers of history and a panoramic view that reflects the timeless beauty of its surroundings.

Contact

Email

caryn@bandbluxuryproperties.com

Phone

(267) 614-6484