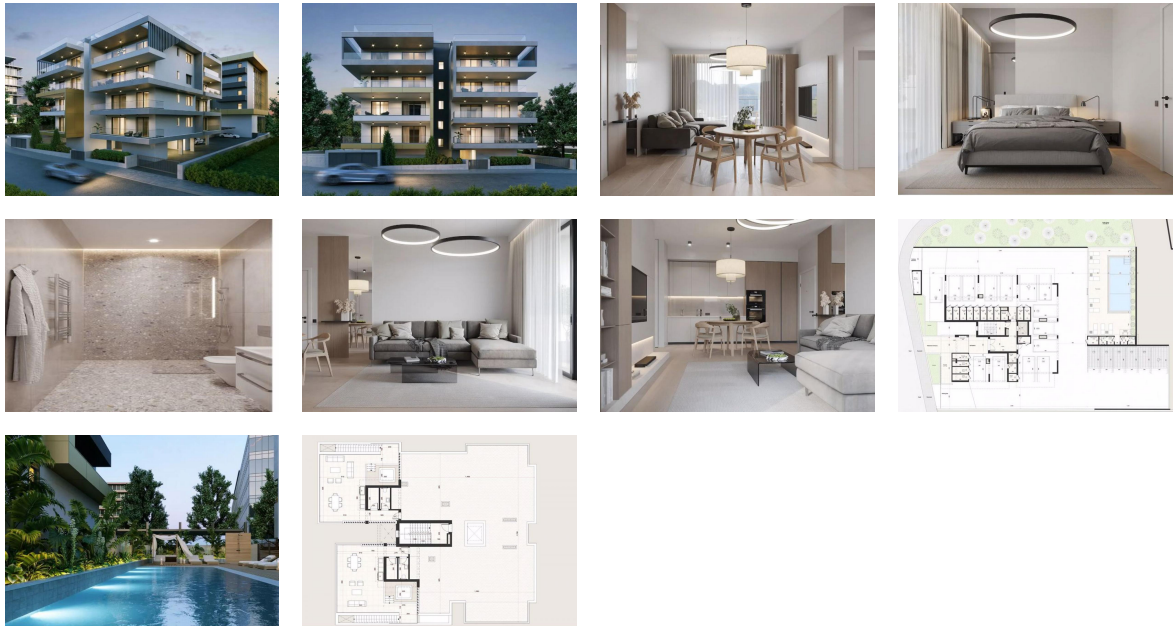


APARTMENT FOR SALE



Mesa Geitonia

Mesa Geitonia, Limassol

Cyprus

Asking Price

€771,100

Bedrooms **3**

Year Built **0**

Bathrooms **2**

Date Listed **02/23/2025**

Size **115 Sq M**

Listing ID **GL-1762791883**

Listed by: Emerald Property Consultants - Cyprus

For more information, visit:

<https://www.globallistings.com/12027470>

Overview

Three Bedroom Penthouse for sale in Mesa Geitonia, Cyprus - Title Deeds (New Build Process)

This project comprising of 14 apartments and 2 penthouses over 4 floors represents more than just a place to live or work, its the beginning of a new chapter in urban living. It offers residents and professionals alike the perfect balance between accessibility and tranquillity with thoughtfully designed residential spaces with modern amenities.

- Master bedroom with en-suite and fitted wardrobes

- 2 Bedrooms with fitted wardrobes

- Open plan living - lounge - dining - kitchen area

- Family Bathroom

- Internal area 115 m2
- Roof garden 81 m2
- Covered veranda 25 m2
- Communal Pool
- Parking space for each apartment
- Storage rooms on lower floor
- 43 Minutes to Larnaca International Airport
- 43 Minutes to Paphos International Airport
- 10 Minutes to Santa Barbara beach
- 8 Minutes to Limassol Town Centre
- 11 Minutes to Limassol Marina
- Suitable for Cyprus Permanent Residency - Fast Track
- Energy efficiency rating A
- Subject to VAT

Limassol

Limassol is a city on the southern coast of Cyprus. It's known for the centuries-old Limassol Castle, home to the Cyprus Medieval Museum and its collection of pottery and tombstones. On the seafront is the Prokymea (Molos) Sculpture Park, with sculptures by Cypriot, Greek and international artists. To the northeast is the Limassol Archaeological Museum, exhibiting artefacts from the Neolithic to the Roman periods.

To the east, the Amathus archaeological site contains the preserved ruins of an ancient town, once a kingdom of Cyprus. Farther east is Governor's Beach, known for its calm waters and dark gray sand against a stark backdrop of white chalk rocks. Offshore dive sites include artificial reefs and man-made underwater caves that resemble tombs. Nearby are the Troodos Mountains, with Byzantine monasteries, churches with ancient frescoes and ski resorts. Troodos National Forest Park has pine forests and waterfalls. Vineyards dot the countryside, marking the resurgence of Cyprus's ancient wine-making tradition.

* Title Deeds (New Build Process)

* Roof Garden

- * Communal Pool
- * Suitable for Cyprus Permanent Residency - Fast Track
- * Subject to VAT
- * Energy Efficiency - A
- * Under Construction - Delivery due June 2026

Mesa Geitonia

Mesa Geitonia

County: Limassol

Sale Type: For Sale

Ref #: CRG005N3P

Contact

Email

Phone

info@cyprusemerald.com