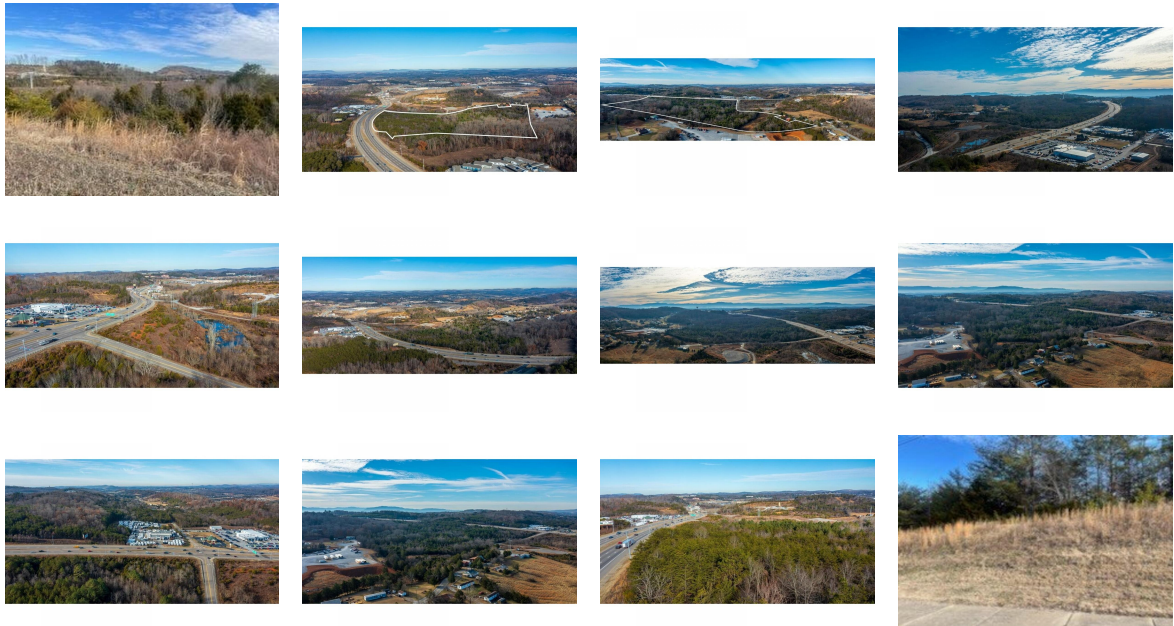


HOME FOR SALE



____ Winfield Dunn Pkwy
 Mount Rd Parkway
 Sevierville, Tennessee
 United States

Asking Price
\$9,999,000

Bedrooms	0	Year Built	
Bathrooms	0	Date Listed	01/27/2025
Size	0 Sq Ft	Listing ID	GL-1741411810

Listed by: Homes & Land Magazine

For more information, visit:
<https://www.globallistings.com/12022835>

Overview

56.08 ACRES ON THE CORNER OF HWY 66 / WINFIELD DUNN PARKWAY AND E. MOUNT ROAD, CLOSE TO I-40 , BUC-EE#039;S , ETC THIS 56.08 ACRES IS A RARE FIND! ENDLESS POSSIBILITIES! PRIME LOCATION! MUST SEE TO APPRECIATE ALL THAT IS BEING OFFERED! ALL CITY OF SEVIERVILLE UTILITIES ARE AVAILABLE - UTILITY WATER, SEWER, NATURAL GAS, ZONED HIGHEST COMMERCIAL ZONING SEVIERVILLE HAS AVAILABLE,. THIS LOCATION HAS 15 MILLION VISITORS PASS BY EACH YEAR/ TRAFFIC COUNT ON HWY. 66 IS AN AVERAGE OF 65,000. PER DAY. PRICED TO SALE @ 9,999,000. PLEASE SEE THE VIDEO! DRONE PHOTOGRAPHY USED.

Contact

Email
TerriSellsDirt@aol.com

Phone
(865) 556-4111