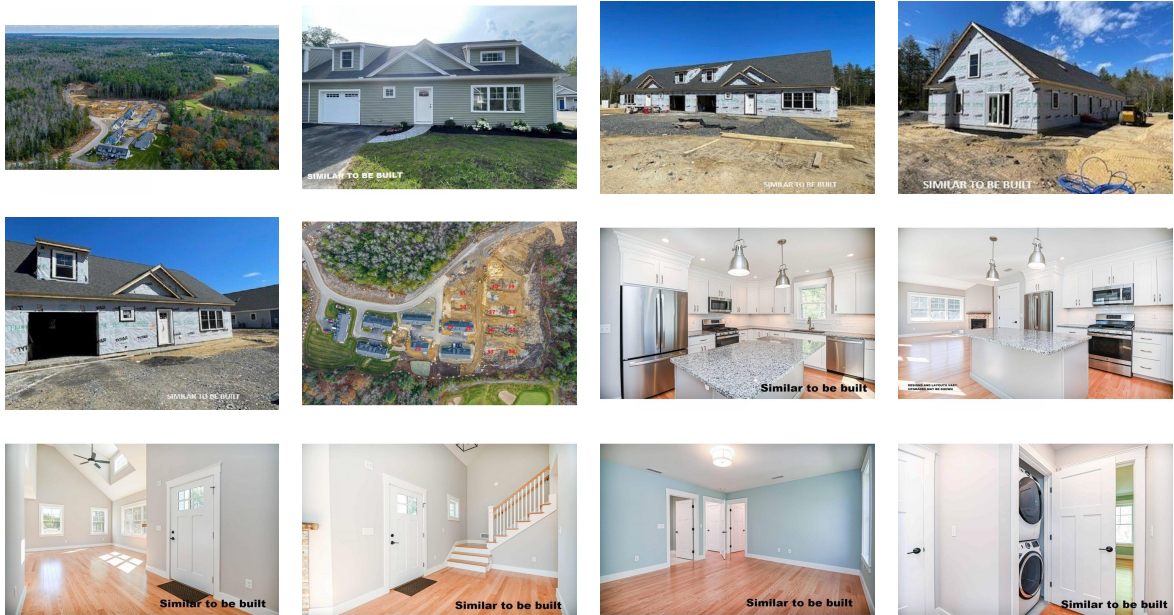


HOME FOR SALE



6 Striper Way
Wells, Maine
United States

Asking Price
\$525,000

Bedrooms	2	Year Built	
Bathrooms	2	Date Listed	01/26/2025
Size	1,495 Sq Ft	Listing ID	GL-1746529733

Listed by: Homes & Land Magazine

For more information, visit:

<https://www.globallistings.com/12018115>

Overview

ENJOY SITES AND SOUNDS FROM YOUR BEAUTIFUL SCREEN ROOM~ Come home to Fairway View Village in Wells, Maine, Southern York County's newest 55+ condo development. These to-be-built 2-bedroom, duplex-style units have an expected occupancy around the holidays, weather permitting. Age in place while living comfortably in this thoughtfully designed first floor open concept floor plan. Lots of additional space is available on the 2nd level featuring a guest bedroom, a full bathroom and a sun-drenched loft boasting a VELUX skylight. Step into your private screened-in porch and enjoy the surrounding natural beauty the area has to offer. The primary bedroom suite has a walk-in closet and the primary bathroom boasts a 5' step in shower and double sinks. One-car attached garage has the potential for 274 square feet of additional living space above, if desired. Storage for all your seasonal furniture is available in the 5-6' crawl space accessed by an exterior bulkhead. Generous allowances and many upgrades available. Reasonable condo fees of \$350 a month includes maintenance of all the roads, all the septic, well water and irrigation systems, and all common area maintenance, including the Clubhouse. The Clubhouse includes a centralized mail center, an open concept fully furnished function/meeting room, a full kitchen, handicapped accessible bathroom plus a separate equipped exercise room. A total of 46-units will be built of which 29 are

already sold and occupied. Two pets are allowed and dogs have a limit of 70 pounds each. Only one owner must be 55+ with four single family units having exceptions, per town approval. Just minutes to several area beaches from York to Kennebunkport, medical facilities, fine amp; casual dining, shopping amp; golf. AMTRAK available nearby amp; major road access is less than 2.5 miles away. Just 75-miles to Boston, MA and 30 min. to South Portland. All photos, renderings and floor plans show #039;#039;Similar to be built.#039;#039;

Contact

Email

loribarrettbroker@gmail.com

Phone

(207) 337-1515