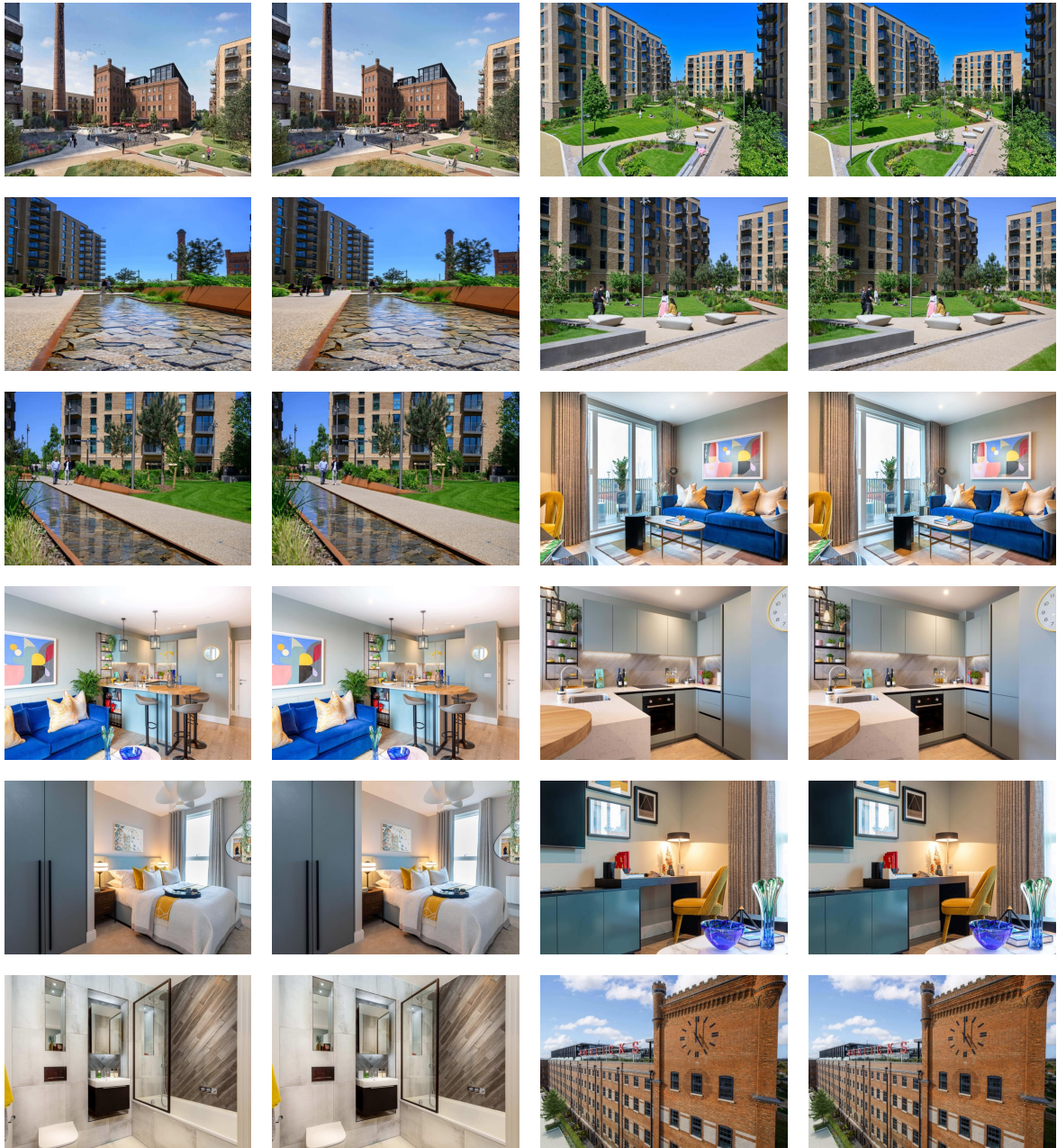


**APARTMENT FOR SALE**



Slough

Slough, Berkshire

United Kingdom

Asking Price

€335,000

Bedrooms 1

Bathrooms 1

Size 49 Sq M

Listed by: Trustpoint

For more information, visit:

<https://www.globallistings.com/11994014>

Year Built

0

Date Listed

12/03/2024

Listing ID

GL-1733221874

Overview

Price Range: 285,000 - 660,000

Welcome to an iconic landmark development in central Slough. This stylish collection of new and refurbished apartments, duplexes, and houses is part of the restoration of the historic Horlicks Factory and Clocktower, offering a unique blend of history and modern living.

#### Features and Amenities:

- \* Historic Landmark: Restoration of the iconic Horlicks Factory and Clocktower.
- \* Modern Living Spaces: A mix of new and refurbished apartments, duplexes, and houses.
- \* Exclusive Facilities: Gym, residents' lounge, rooftop terrace, and co-working hub.
- \* Prime Location: Just 0.2 miles to the main train station and Crossrail, with 15-minute travel to London Paddington and 6 minutes to Windsor.
- \* Scenic Surroundings: Located in the Royal County of Berkshire, 4 miles from historic Windsor and close to picturesque towns and villages like Henley-on-Thames and Bray.
- \* Recreational Opportunities: Enjoy walking in ancient Burnham Beeches, golfing at nearby Stoke Park, and shopping at Windsor and Westfield London.

#### Property Sizes:

- \* Apartments and Houses: 523 - 1,129 sqft (49 - 105 m2)

This development is part of Slough's major town regeneration, offering accessibility, convenience, and exceptional value. With great transport connections, top schools, parks, and leisure facilities, this location provides an unparalleled living experience in a historically rich setting.

Personalised Live Video Tours Available

Experience the unique blend of history and modern convenience in Slough. Your new home awaits!

**Contact**

**Email**

**[sales.department@trustpoint.com.tr](mailto:sales.department@trustpoint.com.tr)**

**Phone**

**+90 507 542 77 62**