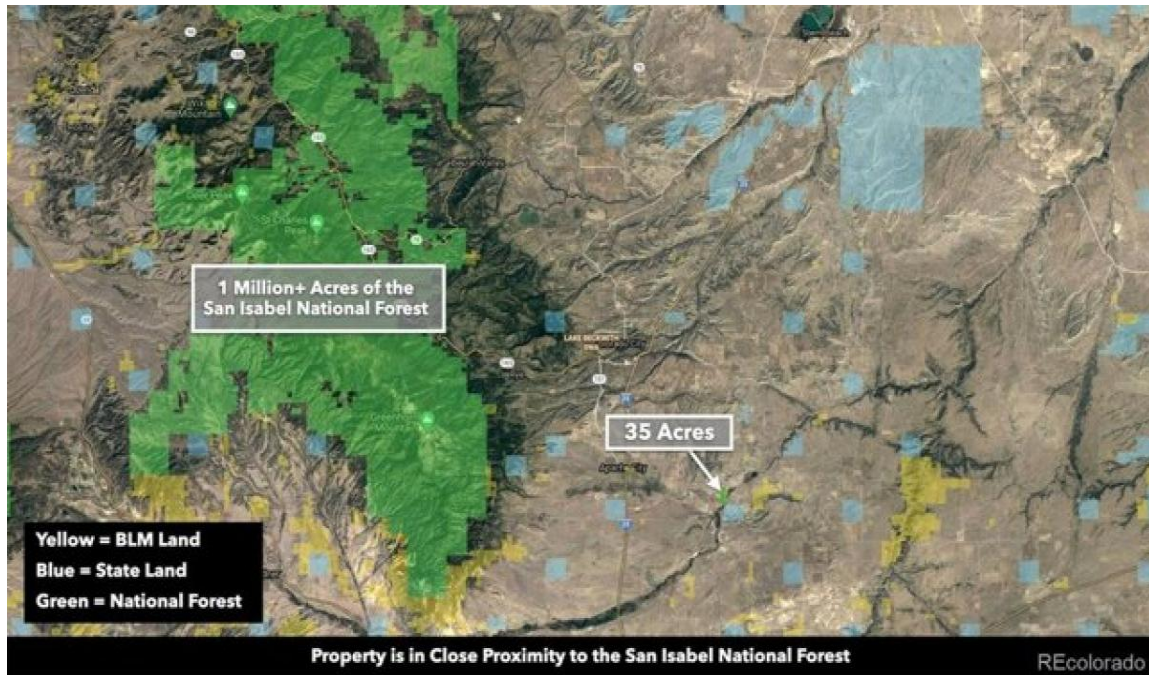


RESIDENTIAL LAND FOR SALE



Non Lonesome Whistle Rd
Walsenburg, Colorado
United States

Parcel Size0

Date Listed

08/06/2024

Listing ID

GL-

1726950422

Asking Price

\$49,997

Listed by: Realtyww Info

For more information, visit:

<https://www.globallistings.com/11764107>

Overview

35 Acre Homesite with Electricity and Road Access South of Pueblo, Colorado. This amazing property has breathtaking mountain views, open meadows, creek access, rolling terrain and mature trees. There are electricity lines and poles already in place only 230 feet south of the southern boundary. Use the property recreationally or build your dream home. Permanent homes may be built along with accessory buildings, corrals, barns, workshops, guest homes, etc. Livestock is permitted if fenced. No commercial livestock. 600 square feet minimum for site built homes. Double wide mobile homes are permitted. Camping is allowed 7 days per month up to 30 days per year. There are homes, accessory buildings and ranches on nearby parcels in Ghost River Ranch (see photos). Close to Interstate 25. Only 40 miles from Pueblo, which has a population of more than 110, 000 people. In Pueblo you will find employment opportunities, medical care, groceries, supplies, building materials, big-box retailers, entertainment and professional services. Just 20 miles from the town of Walsenburg, where you will find groceries, fuel, supplies, restaurants, medical care, schools and professional services. The Spanish Peaks Regional Health Center has a Level IV Trauma Center, specialty clinics and the 5 Star Rated Spanish Peaks Veterans Community Living Center. Spanish Peaks Regional Health Center(Website). Spanish Peaks Veterans Community Living Center(Website). Lathrop State Park is

just South of the property and less than a 24 mile drive from this 35 Acre property. Lathrop State Park is Colorado's first State Park and consists of 1, 594 Acres. Nestled in the shadow of the Spanish Peaks, Lathrop State Park has two lakes; Martin Lake and Horseshoe Lake. Activities at Lathrop State Park include Boating, Swimming, Jet Skiing, Water Skiing, Camping, Fishing, Golfing, Archery, Hunting for Waterfowl and Small Game.

For more details:

Listed by: Danny Shuford

Contact

Email

Phone