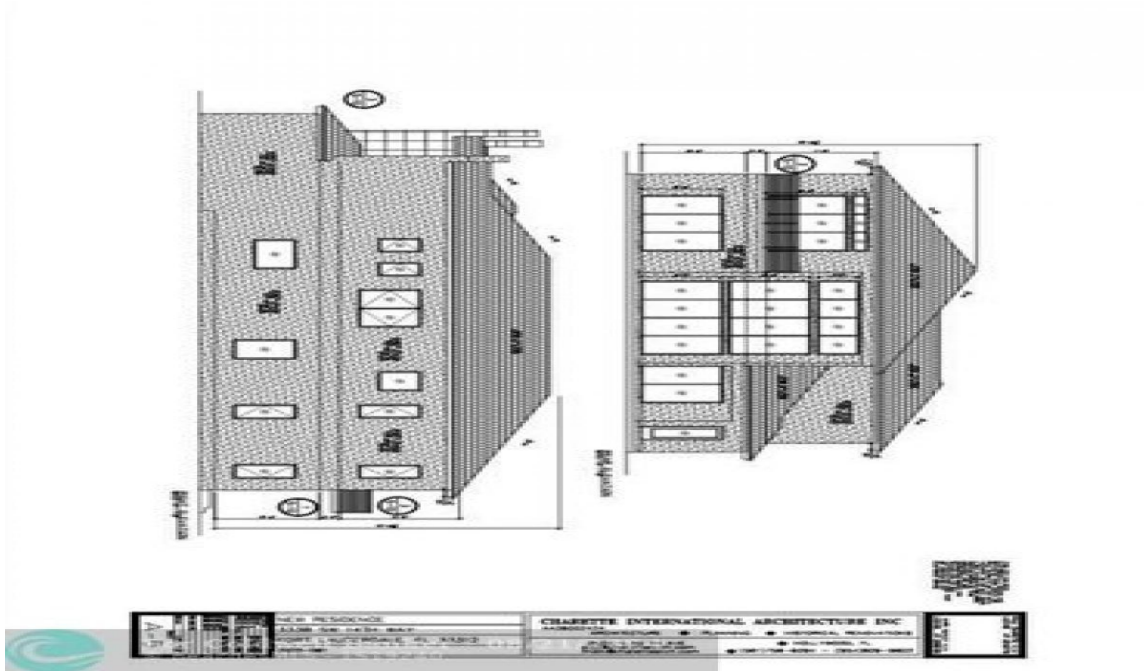


RESIDENTIAL LAND FOR SALE



333 Sw 14th Way

Fort Lauderdale, Florida

United States

Asking Price

\$1,895,000

Parcel Size 0

Date Listed

08/23/2024

Listing ID

GL-

1726536730

Listed by: Realtyww Info

For more information, visit:

<https://www.globallistings.com/11512215>

Overview

Extremely Rare Sailboat Bend Homesite Situated Directly On The North Fork Of The New River!! Tucked Away in A Secluded Enclave Which Will Be Made Up Of Only (10) Private Custom Estate-Size Waterfront Homes, But Only Minutes Away From Downtown, Las Olas, I-95, Airport, and The Beaches!! Cleared and Filled 1/4 Acre, South Facing Lot W/ New, Full Length 75' Concrete Seawall and Composite Dock, Ready For Immediate Development! Includes Building Plans For A Luxurious, Transitional ~6000 Sq. Ft. 5 Bed/6.5 Bath (Or Bonus Room) Residence W/ State Of The Art Features and Large, Spacious Living Areas and Walls Of Glass Doors and Windows Creating A Light and Open Interior That Blends in Seamlessly W/ The Immense Covered Patios, Decking, and Resort Style Pool!! This Is The Perfect South Florida Package Ready To Go!!

For more details:

Listed by: Joseph Beltrand

Contact

Email

Phone

