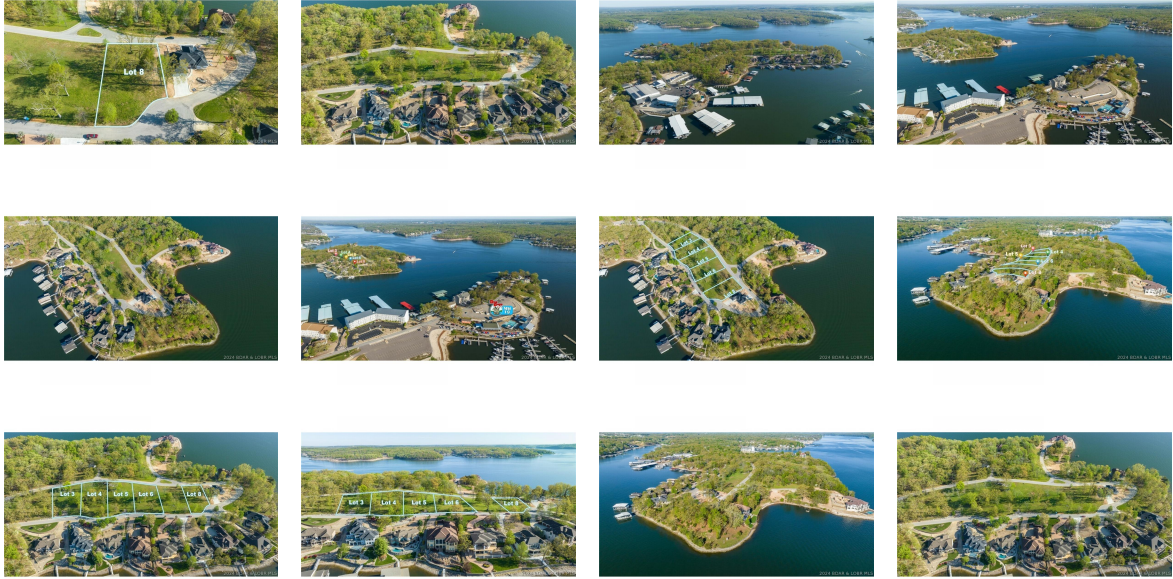


RESIDENTIAL LAND FOR SALE



Lot 8 Darwin Drive
Osage Beach, Missouri
United States

Parcel Size **0 Sq Ft**

Date Listed

09/06/2024

Listing ID

**GL-
1725598084**

Asking Price
\$199,900

Listed by: **The Real Estate Book**

For more information, visit:

<https://www.globallistings.com/11182714>

Overview

The premier subdivision in Osage Beach, right by the Hospital, is Nichols Point Estates! Lot 8 features unparalleled lake views with almost 280 degree views of the main channel to the large cove at the 19 mile marker! An exclusive neighborhood with new construction taking place currently featuring amazing Lakefront estates up to 12 million to incredible Lake View homes. All these lots have great access to utilities & the ability to hook up to City Water, City Sewer, Natural Gas, High Speed Internet & Ameren for electric service. These Lake View lots have been surveyed & ready for your next dream home in a beautiful park like setting. These few remaining lots are finally back on the market, you will fall in love with the location by water & land! These are large lake view lots with large building envelopes! Lot 8 has the ability to access the lot from either side of the road. Check out the new construction next door for ideas to have multiple garages for your next home build! This is one of the last remaining naturally aesthetic Lake View Lots in a coveted neighborhood. Plus, they are fully buildable lots with level terrain easy for slab construction or walk out basement estate.

Contact

Email
ed@favoritelaketeam.com

Phone
(866) 224-1761

